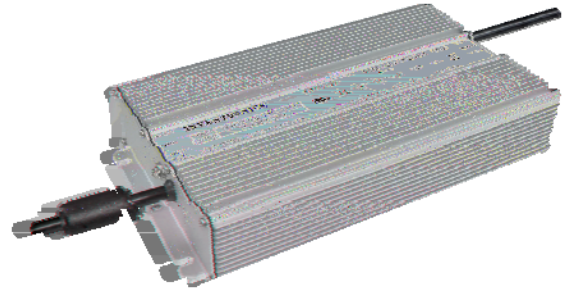


-
-
-
-
-
-
-
-
-



+;< 9^^^9: ©ç = /6 É9Ü ~D}kžÿµ 98 <GIk ÄÄÝä ä
 œfož4©çD}© •%ÁçkxÔÁçCöœÁç^• ò—rožÝä |äk-Ø ÙÓ—(k'ñ
 •½kâÝªUä4D} U´Åkw•x4D} .xož¶•y´k ,...ª´o•v´o•9´
 o•?è´C“´k¾©´š44.D} —žI ôož

	(1)			(2)			(3)
					120Vac	220Vac	
48 Vdc	90~305 Vac 127~300 Vdc	0 ~ 12.5 A	600 W	92.5%	0.95	0.90	EUV-600S048ST
54 Vdc	90~305 Vac 127~300 Vdc	0 ~ 11.2 A	600 W	93.0%	0.95	0.90	EUV-600S054ST

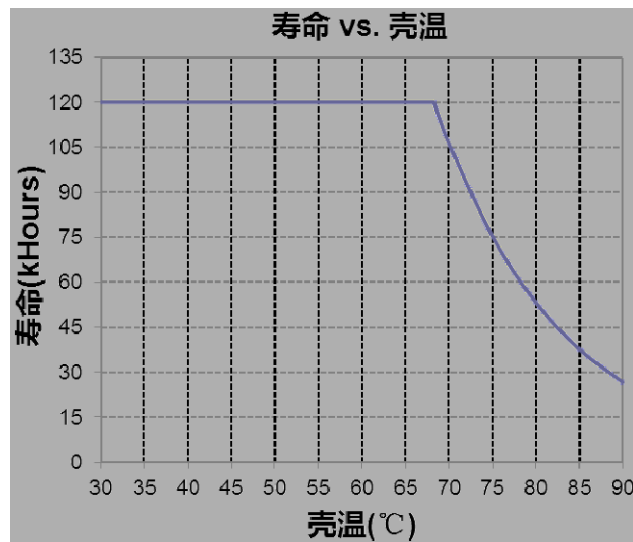
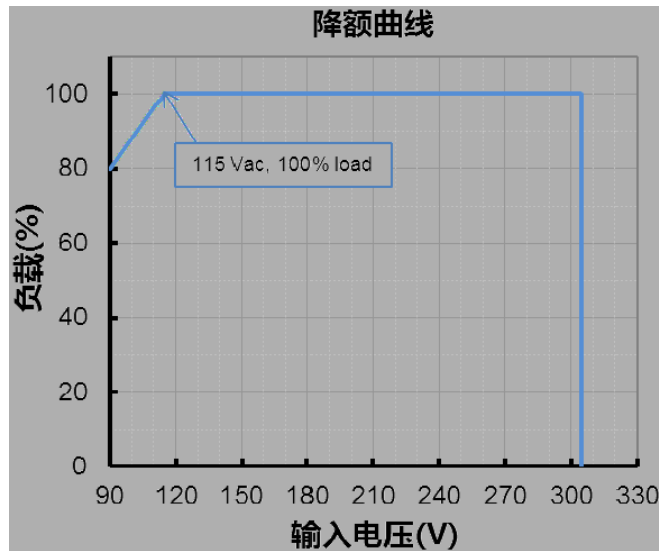
	90 Vac	-	305 Vac	127~300 Vdc
	47 Hz	-	63 Hz	
	-	-	0.75 MIU	UL8750; 277Vac/60Hz
	-	-	0.70 mA	IEC60598-1; 240Vac/60Hz,
	-	-	6.15 A	
	-	-	3.25 A	

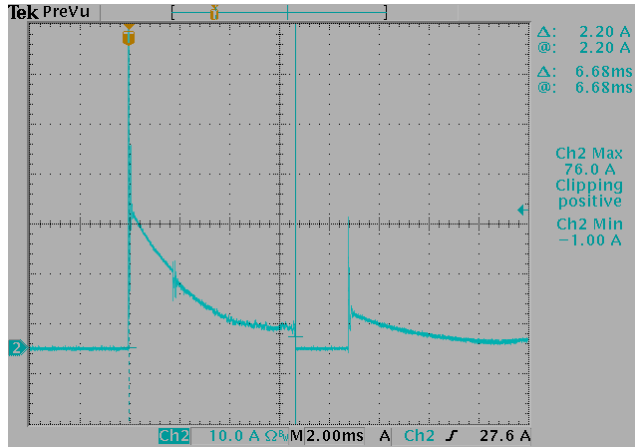
	-	-	3.82 A ² s	
	0.90	-	-	100-277Vac, 50-60Hz, 60%-100% (360 - 600W)
	-	-	20%	
	-	-	10%	220-240Vac, 50-60Hz, 75%-100% (450 - 600W)



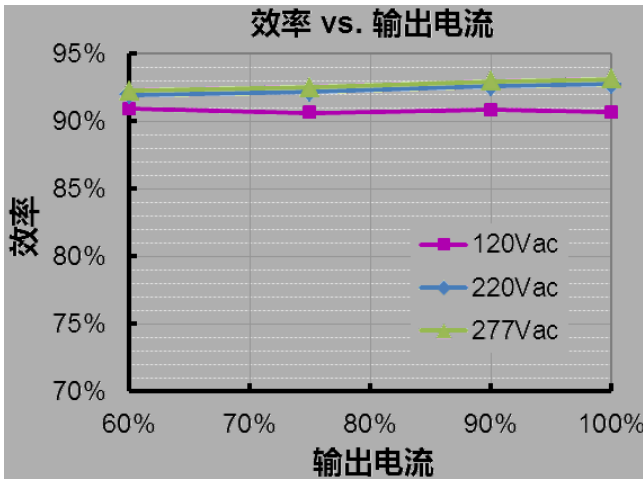


EMS	
EN 61000-4-11	Voltage Dips
EN 61547	Electromagnetic Immunity Requirements Applies To Lighting Equipment

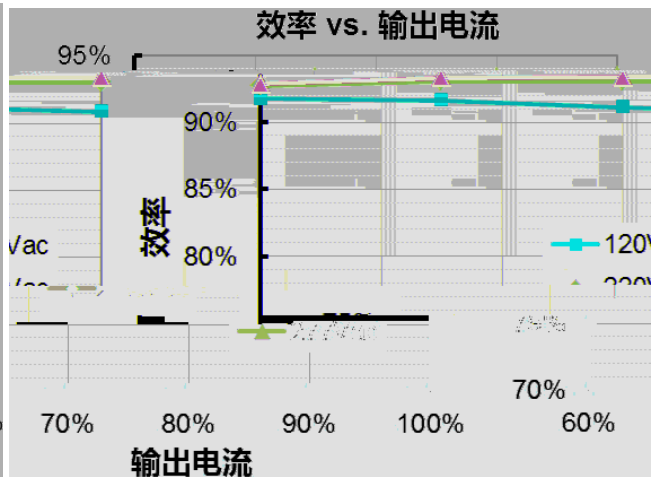




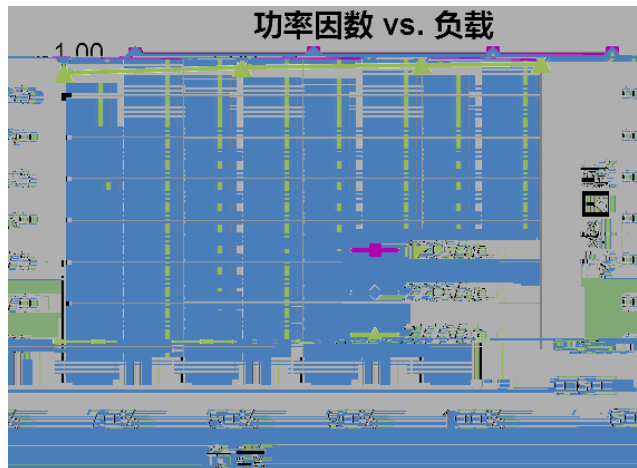
EUV-600S048ST
效率 vs. 输出电流

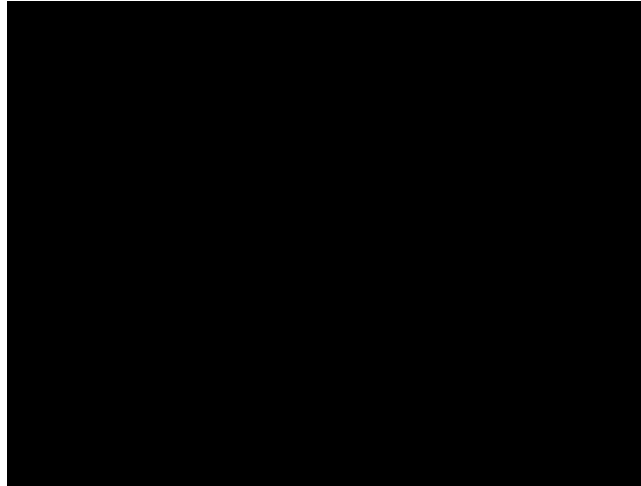


EUV-600S054ST
效率 vs. 输出电流

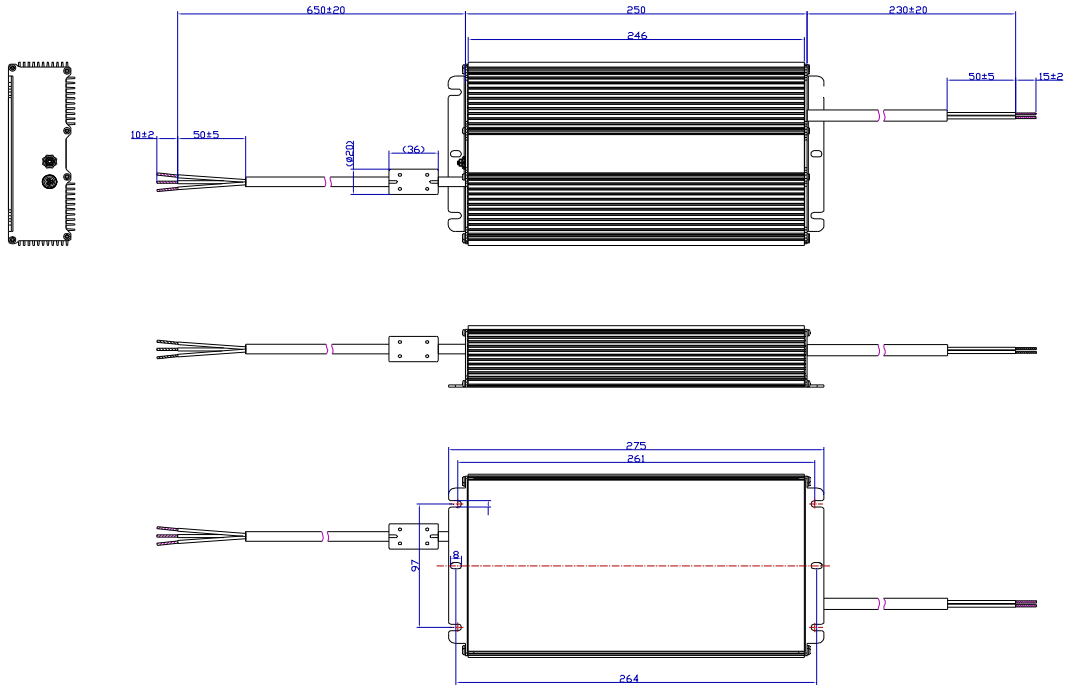


功率因数 vs. 负载





	105% _{lo}	110% _{lo}	120% _{lo}	



2019-11-06	A			
2019-12-17	B			
			EN 61000-4-5	